

TSI 05/2014

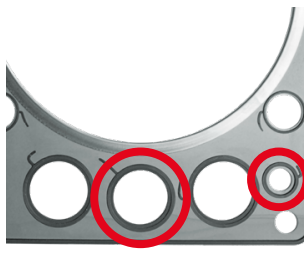
Replacement of cylinder-head gasket

Mercedes-Benz OM 457 | OM 460

Problems and damage regularly occur when replacing the cylinder-head gasket on OM 457/OM 460 series engines due to the fact that the gasket used is not the right version for the cylinder head despite a matching engine number. This results in engine damage, leading to high repair costs and customer annoyance.



The following should be observed to avoid these problems:
Cylinder-heads with a smooth sealing surface and no grooves were fitted up to engine number 085588
(cylinder-head gasket 462.452 - height of elastomer profiles: 1.8 mm).



ElringKlinger AG | Division Aftermarket

Max-Eyth-Straße 2 | D-72581 Dettingen/Erms

Fon +49 7123 724-799 | Fax +49 7123 724-798

service@elring.de | www.elring.com



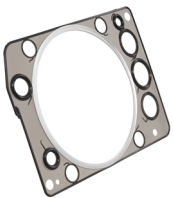
Das Original

From engine number 085589 onwards, use has been made of modified cylinder-heads with milled grooves around water and oil passages.

The elastomer profiles are now correspondingly higher on the matching cylinder-head gasket (cylinder-head gasket 462.203 - height of profiles: 3 mm). Sealing is only possible with this cylinder-head gasket!



When choosing spare parts it is therefore essential to check the type of cylinder-head fitted and which cylinder-head gaskets are required. The manufacturer's fitting instructions must also be heeded.



A distinction is made between:

- Cylinder-head with milled grooves and cylinder-head gasket with raised profile (462.203)
- Cylinder-head with no grooves and cylinder-head gasket with flat profile (462.452)

When purchasing spare parts always make sure that these really are genuine Elring spare parts.

In this context we would like to point out that with certain suppliers of spare parts on the market the reference number does not correspond to the genuine spare part number and that the manufacturer's modified technical specifications have not been incorporated.

ElringKlinger AG | Division Aftermarket

Max-Eyth-Straße 2 | D-72581 Dettingen/Erms

Fon +49 7123 724-799 | Fax +49 7123 724-798

service@elring.de | www.elring.com



Das Original