

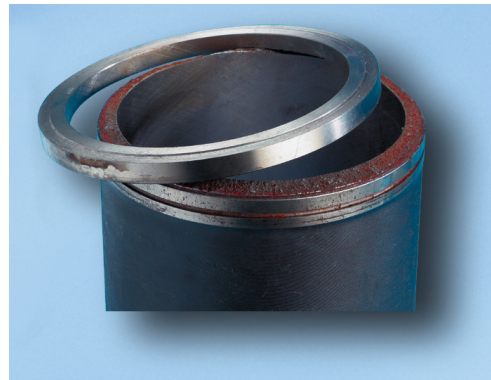
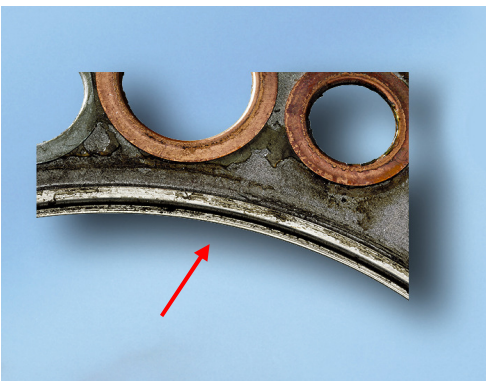
Tips from the gasket expert

Engine failure – is the cylinder head gasket to blame?

Failure of a cylinder head gasket on a commercial vehicle due to incorrect installation

Damage symptoms:

The metal combustion chamber eyelet of the cylinder head gasket has been pressed entirely together on the inside by the collar of the liner. The extreme forces that arose when the engine was started blew off the collar of the liner, resulting in serious engine damage.



Cause:

When the cylinder head gasket was installed, the combustion chamber diameter of the gasket was not checked. A gasket was used that appeared to match the gasket which had been removed, but it had a smaller combustion chamber diameter.

Other possible causes:

- A low quality reproduction was used instead of the original Elring cylinder head gasket.

Measures:

Ensure that no force is required when placing the cylinder head gasket on the liner.