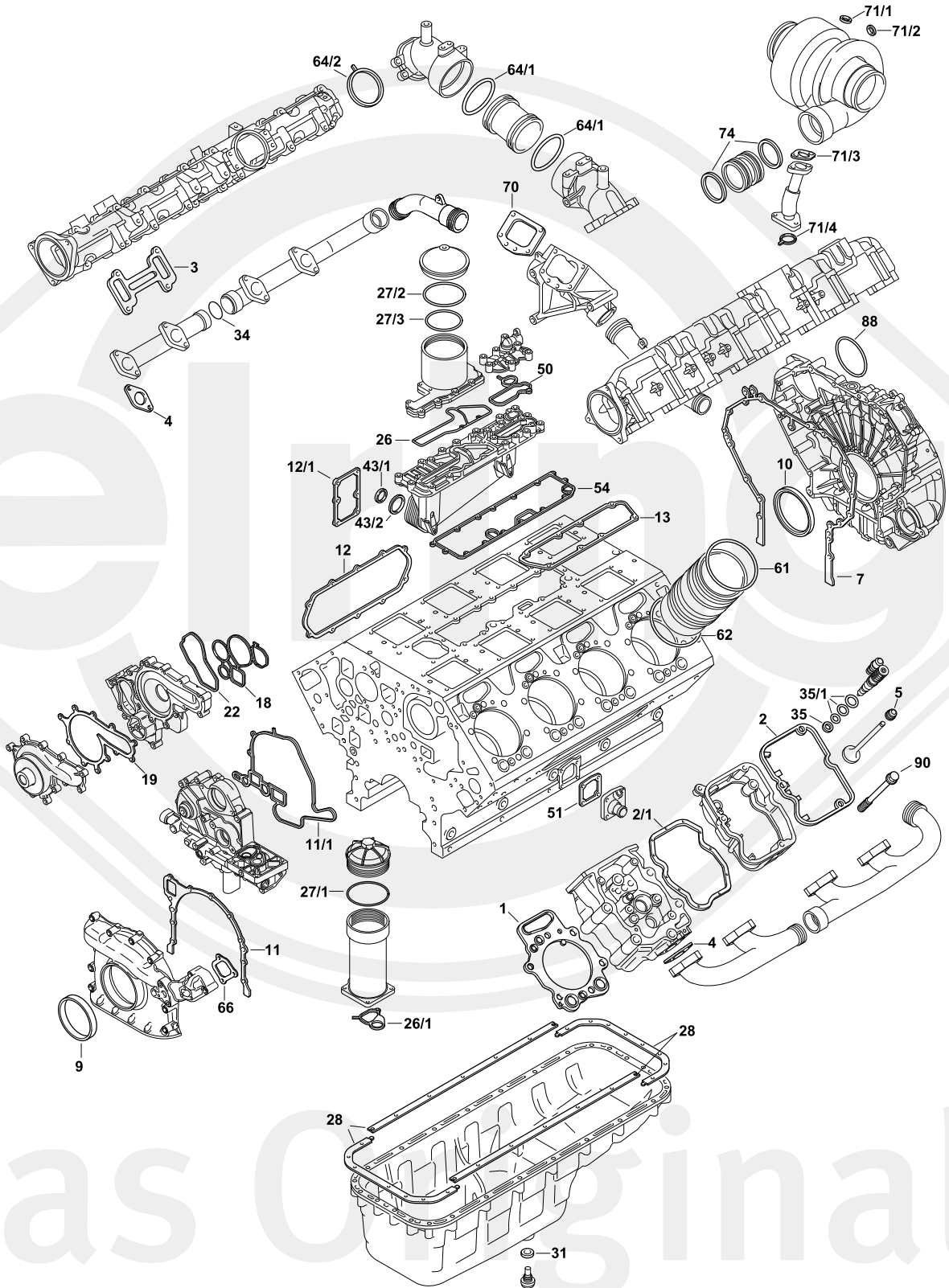




Das Original

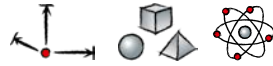
Scania

DC 16





DC 16











S ⊕ *	771.800	1x	551 387	–	→ 09.203    125.830
ES ⊕	138.490	8x	550 469	–	→  1018724 SSS   
ES	138.491	8x	550 469	–	→  1018724 SSS   
ES	379.320	8x	1 725 112	–	 1018725 SSS →  125.830
ES	798.690	8x	–	–	 1018725 SSS →  247.490
ES ⊕	346.420	8x	2 295 057	–	 740.331
LBS	199.471	8x	–	–	incl. 1x126.001; 1x 126.010
ZKS	125.990	8x	1 852 442 (6x)	M 16x2x189	–
1	125.830	8x	1 892 765	Ø 133 mm   VMQ	HPI, PDE Gen.I
1	247.491	8x	1 893 054	Ø 133 mm   FPM	HPI, PDE Gen.I
1	740.331	8x	1 893 055	Ø 136 mm   FPM	XPI, PDE Gen.II
2	060.600	8x	1 411 851	–	→  1018724 SSS
2	374.420	8x	1 505 366	–	 1018725 SSS→
2/1	060.620	8x	1 542 104	–	→  1018724 SSS
2/1	379.310	8x	1 449 542	–	 1018725 SSS→
3	152.140	8x	1 516 474	–	–
4	135.020	8x	1 309 051	–	–
5	125.771	32x	1 920 860	10x12,4/16,2x9,5 FPM	–
7	499.530	1x	1 505 507	–	–
7/1	036.164	1x	–	70 ml	 Dirko™ HT 
9	152.320	1x	1 392 708	120x140x12 ASW RD PTFE/ACM	–
10	090.510	1x	1 433 183	145x175x13 ASW LD PTFE/ACM	→  1003761
10	904.820	1x	1 757 903	145x185x13 ASW LD PTFE/ACM	 1003762→
10	227.290	1x	1 786 563	155x185x13 AW LD PTFE/ACM	Gen. II
11	297.650	1x	1 427 660	–	–
11/1	570.180	1x	1 412 878	–	–
12	137.010	1x	1 375 383	–	–
12/1	036.164	1x	1 446 215	70 ml	 Dirko™ HT 
13		4x	1 745 816	–	–
18	582.960	1x	1 457 411	–	–
19	499.550	1x	1 498 657	–	–



DC 16



22	570.290	1x	1 464 464	-	-
26		1x	1 466 382	-	-
26/1		1x	1 512 488	-	-
27/1		1x	392 654	119,5x3 VMQ RD	-
27/2	281.906	1x	1 769 799	132,94x3,53 ACM RD	-
27/3	919.226	1x	323 790	114,5x3 FPM RD	-
28	175.034	1x	1 865 675	-	-
31	154.080	1x	1 439 814	24,2x35,9x3 FE/FPM	-
34	274.701	4x	1 794 745	-	-
35	002.194	8x	1 421 424	9,6x19,7x2 CU A	-
35/1	136.880	8x	1 422 564	-	PDE Euro3   Euro5 ethanol
35/1		8x	1 774 107	-	PDE Euro4
35/1	189.270	8x	1 932 820	-	XPI
43/1	136.790	2x	1 484 765	-	-
43/2	138.290	2x	1 484 766	-	-
50		1x	1 466 383	-	-
51	138.440	1x	1 510 331	-	-
52	118.907	1x	812 415	16x20x1,5 CU A	-
54		1x	1 509 813	-	-
61	126.001	8x	2 071 088	144x2,5 FPM RD	-
61	743.401	8x	2 188 199	142,5x3,35 FPM RD	-
62	126.010	8x	1 328 995	147,5x4 EPDM RD	-
64/1	901.950	2x	1 392 192	72,7x8,3 FPM RD	-
64/2		2x	1 383 433	-	-
66		1x	1 381 059	-	-
70	217.610	1x	1 801 736	-	-
71/1	119.504	X	1 471 271	16x22x1,5 CU A	-
71/2	153.290	X	1 373 793	16,7x24x1,5 FE/FPM A	-
71/3		1x	1 392 930	-	-
71/4	249.250	1x	1 422 714	-	-
74		2x	1 862 733	-	-
88	515.130	1x	1 437 280	144,5x3 FPM RD	-